

Crop Report for June 25, 2006

Crops are generally reported in good to excellent condition, according to Saskatchewan Agriculture and Food's weekly crop report.

Fall cereal crops were reported to be close to 80 per cent in good to excellent condition provincially, with over 90 per cent of the crops at or ahead of normal development for this time of year. Spring cereal crops were close to 80 per cent in good to excellent condition, with over 75 per cent of the crops at or ahead of normal development. Flax and canola crops were reported to be 80 and 79 per cent in good to excellent condition respectively, with over 80 per cent at or ahead of normal development. Over 75 per cent of the pulse crops are reported to be in good to excellent condition, with

75 per cent reported to be at or ahead of normal development.

There was a slight improvement in topsoil moisture conditions on crop land with 37 per cent of crop reporters rating conditions as surplus, compared to 47 per cent for last week.

Pasture conditions have improved with 92 per cent reported to be in good to excellent condition, compared to approximately 85 per cent at the end of May. Availability of livestock water improved from the end of May, with notable improvements in the southeast.

Almost three per cent of the 2006 hay crop has been cut, with less than one-half per cent baled or silaged.

The main sources of crop damage during the past week were flooding and disease, according to crop reporters.

For further information contact:
Terry Bedard, P.Ag.
Agricultural Economist
Policy Branch
Saskatchewan Agriculture and Food
306-787-5956
e-mail: policybranch@agr.gov.sk.ca

Available on the SAF Internet site at:
www.agr.gov.sk.ca

Please let us know if you no longer need to receive a printed copy.

Saskatchewan Crop Conditions, June 25, 2006

	Winter Wheat	Fall Rye	Spring Wheat	Durum	Oat	Barley	Triticale		
% excellent	32	29	26	33	25	26	11		
% good	55	52	58	58	57	58	86		
% fair	10	16	13	8	14	12	3		
% poor	2	3	3	1	4	4	0		
% very poor	1	0	0	0	0	0	0		
	100	100	100	100	100	100	100		
	Flax	Canola	Mustard	Sun- flower	Lentil	Pea	Canary Seed	Chick- pea	
% excellent	23	25	21	34	33	31	27	23	
% good	57	54	65	64	55	57	61	56	
% fair	18	18	12	2	11	11	11	21	
% poor	2	3	2	0	1	1	1	0	
% very poor	0	0	0	0	0	0	0	0	
	100	100	100	100	100	100	100	100	

1 Year Ago

Surplus moisture on cropland was reported by 37% if reporters.

Crops were generally in good to excellent condition. Flooding and wind were the main sources of crop damage.

98% of reporters rated pastures in good to excellent condition.

One per cent of the hay had been cut.



South eastern Saskatchewan (Crop Districts 1, 2, & 3ase)

The south eastern region had sun, cloud, and rain during the past week. An average of 20 mm of precipitation was reported, ranging from an average low of 7 mm reported in Crop District (CD) 3ase, to an average high of 30 mm reported in CD 2b. Damage from flooding was reported in CDs 1b and 2. Pea-sized hail was reported in the Kennedy area. Damage from wind was reported in CDs 1a and 2a. Drought damage was reported in CD 3ase.

Crop reporters rated crops in good to excellent condition at the following percentages: Winter Wheat – 94%; Fall Rye – 87%; Spring Wheat – 92%; Durum – 90%; Oats – 93%; Barley – 93%; Triticale – 95%; Flax – 85%; Canola – 90%; Mustard – 84%; Sunflowers – 98%; Lentils – 85%; Peas – 88%; Canary seed – 92%; and Chickpeas – 95%.

For crop development, south eastern reporters rate 70% of spring cereals at normal development for this time of year; oilseeds – 63% at normal; pulse crops – 71% at normal; and fall cereals – 53% ahead.

Topsoil moisture conditions on crop land improved slightly over last week as areas had a chance to dry out. Seventy-nine per cent of reporters rated topsoil moisture conditions as adequate, compared with 73% last week. Conditions deteriorated on hay and pasture land with 83% of reporters rating topsoil moisture conditions as adequate, compared with 92% last week.

Crop damage from flea beetles was reported in the Rocanville, Tantallon, and Fillmore areas. Leaf diseases, including tan spot, were

reported in CDs 1, 2b and 3ase. Ascochyta blight was reported in the Marquis area in CD 2b. Gopher damage was reported in CD 1b. Other concerns included heavy weed infestations, yellowing of crops, and ruts in wet fields.

Pasture conditions have improved, with 91% of reporters giving good to excellent ratings compared with 81% at the end of May. Availability of livestock water is similar to late May, with 95% reporting adequate supplies. Inadequate supplies are reported in CD 3ase.

Some haying has started, with 3% cut and ½% baled or silaged. Quality is expected to be good to excellent.

Showers and wind interrupted spraying last week. Fungicide is being sprayed for leaf diseases in the Weyburn and Moosomin areas.

South western Saskatchewan (CDs 3asw, 3an, 3b, & 4)

The south western region was generally warm with some showers during the past week. An average of 16 mm of precipitation was reported, ranging from an average low of 9 mm reported in CD 3asw, to an average high of 28 mm reported in CD 3bn. Frost damage was reported in most areas across the region. Damage from flooding was reported in CDs 3an and 3bn, while hail and drought damage were reported in CDs 3bs and 4a.

Crop reporters rated crops in good to excellent condition at the following percentages: Winter Wheat – 71%; Fall Rye – 67%; Spring Wheat – 93%; Durum – 92%; Oats – 90%; Barley – 93%; Triticale – 98%; Flax – 88%; Canola – 81%;

Mustard – 85%; Sunflowers – 100%; Lentils – 90%; Peas – 93%; Canary seed – 91%; and Chickpeas – 83%.

For crop development, south western reporters rate 77% of spring cereals at normal development for this time of year; oilseeds – 81% at normal; pulse crops – 84% at normal; and fall cereals – 67% at normal development. Some spring wheat, durum, and barley crops are hading out in the Hazlet area. Cereals are in the jointed stage in the Burstall area.

Topsoil moisture conditions on crop land improved over last week as areas had a chance to dry out. Eighty-nine per cent of reporters rated topsoil moisture conditions as adequate, compared with 83% last week. Conditions also improved on hay and pasture land with 87% of reporters rating topsoil moisture conditions as adequate, compared with 83% last week. The Shaunavon area is still dry and crops re just holding their own.

Crop damage from flea beetles was reported in CD 4a. Disease reported included ascochyta blight (CDs 3asw, 3bn) and leaf diseases (CD 3asw, 3an, 3b). Gophers caused crop loss in CDs 3asw, 3b and 4a. Other concerns included yellowing of crops.

Pasture conditions improved, with 75% of reporters giving good to excellent ratings compared with 54% at the end of May. Availability of livestock water has also improved with 100% of reporters rating availability as adequate compared to 94% rating adequate at the end of May.

Some haying has started in the southwest, with 2% cut. Quality is expected to be good. Fall rye was put up for green feed or silage in the Maple Creek area.

Fungicides were applied in the Lisieux, Bengough, and Swift Current areas. Herbicide spraying is behind due to inclement weather. Some that were spraying made ruts and got stuck.

East central Saskatchewan (Crop Districts 5 & 6a)

The east central region was wet during the past week. An average of 26 mm of precipitation was reported, ranging from an average low of 24 mm reported in CD 5a, to an average high of 30 mm reported in CD 6a. Damage from flooding was reported across the region as was localized hail damage.

Crop reporters rated crops in good to excellent condition at the following percentages: Winter Wheat – 94%; Fall Rye – 97%; Spring Wheat – 80%; Durum – 90%; Oats – 76%; Barley – 83%; Triticale – 92%; Flax – 75%; Canola – 81%; Mustard – 90%; Sunflowers – 100%; Lentils – 86%; Peas – 84%; Canary seed – 84%; and Chickpeas – 88%.

For crop development, east central reporters rate 56% of spring cereals at normal development for this time of year; oilseeds – 71% at normal; pulse crops – 66% at normal; and fall cereals – 58% at normal development.

Topsoil moisture conditions on crop land improved over last week as areas had a chance to dry out. Eighty-one per cent of reporters rated topsoil moisture conditions as surplus, compared with 91% last week. Conditions also improved on hay and pasture land with 48% of reporters rating topsoil moisture conditions as surplus, compared with 59% last week.

Crop damage from flea beetles was reported in CD 5. Damage from cereal leaf diseases were reported in CDs 5b and 6a. Ascochyta blight and gophers damaged crops in CD 6a. Other concerns include yellowing of crops, stunted crops, and drown-out. Some fields in the Kelvington area have been plowed down because the seed rotted.

Pasture conditions have improved, with 100% of reporters giving good to excellent ratings compared with 95% at the end of May. Availability of livestock water continues to be reported as 100% adequate.

Some haying has started in the region, with 1% cut and some baled and/or silaged. Quality is expected to be good to excellent.

There is heavy weed pressure in crops as spraying progress has been slow because of poor weather conditions. Custom sprayers in the Humboldt area are booked for two weeks. Roads in the region are suffering from excessive soil moisture.

Some farmers will be seeding for grazing or silage. Estimates of unseeded area include 10 to 15% in the Preeceville area and 8 to 10% in the Humboldt area.

West central Saskatchewan (Crop Districts 6b & 7)

The west central region was wet during the past week. An average of 29 mm of precipitation was reported, ranging from an average low of 19 mm reported in CD 7b, to an average high of 38 mm reported in CD 6b. Damage from flooding was reported across the region. Hail damage was reported in localized areas in CD 6b.

Crop reporters rated crops in

good to excellent condition at the following percentages: Winter Wheat – 86%; Fall Rye – 90%; Spring Wheat – 94%; Durum – 92%; Oats – 98%; Barley – 95%; Triticale – 96%; Flax – 91%; Canola – 94%; Mustard – 88%; Sunflowers – 87%; Lentils – 90%; Peas – 93%; Canary seed – 95%; and Chickpeas – 89%.

For crop development, west central reporters rate 77% of spring cereals at normal development for this time of year; oilseeds – 86% at normal; pulse crops – 82% at normal; and fall cereals – 78% at normal development.

Topsoil moisture conditions on crop land remained the same as last week with 63% of reporters rating topsoil moisture conditions as adequate. Conditions improved on hay and pasture land with 90% of reporters rating topsoil moisture conditions as adequate, compared with 83% last week.

Leaf diseases were reported across the region. Ascochyta blight was reported in the Eston area. Damage from gophers was reported in the Kerrobert area. Some crop are yellowing.

Pasture conditions are the same as the end of May, with 100% of reporters giving good to excellent ratings. Availability of livestock water is also the same as the end of May with 100% of reporters indicating the supplies are adequate.

Haying is getting underway in the west central area with 63% cut and 1% baled or silaged. Quality is expected to be good to excellent.

Weeds are getting ahead of the crops in some locations as farmers try to complete spraying around poor weather conditions. Roads are soft and it is hard to get to grain bins with big trucks.

North eastern Saskatchewan (Crop Districts 8 & 9ae)

The north eastern region had cool, wet weather during the past week that warmed up near the end of the week. An average of 19 mm of precipitation was reported, ranging from an average low of 11 mm reported in CD 8a, to an average high of 25 mm reported in CD 8b. Damage from flooding was reported across the region. Hail damage was reported in the Arborfield, Tisdale, Lake Lenore, and Hoey areas. Damage was expected to be severe in some areas. Some wind damage was reported in the Prince Albert area. The east side of St. James Lake got up to 225 mm and some quarters of land are 80 % submerged. Substantial crop damage is expected.

Crop reporters rated crops in good to excellent condition at the following percentages: Winter Wheat – 90%; Fall Rye – 79%; Spring Wheat – 50%; Durum – 77%; Oats – 53%; Barley – 56%; Flax – 52%; Canola – 52%; Mustard – 51%; Lentils – 52%; Peas – 59%; and Canary seed – 68%.

For crop development, north east reporters rate 50% of spring cereals at normal development for this time of year; oilseeds – 60% at normal; pulse crops – 58% at normal; and fall cereals – 83% at normal development.

Topsoil moisture conditions on crop land improved slightly over last week as some areas dried a bit. Eighty-six per cent of reporters rated topsoil moisture conditions as surplus, compared with 96% last week. Conditions also improved slightly on hay and pasture land with 65% of reporters rating topsoil moisture

conditions as surplus, compared with 80% last week.

Leaf diseases were reported in the Lake Lenore and Humboldt areas. Other concerns include yellowing crops and strong weed populations. Bugs were reported in the clover in the Arborfield area.

Pasture conditions are similar to the end of May, with 100% of reporters giving good to excellent ratings. Availability of livestock water is also the same, with 100% of reporters indicating adequate supplies of water for stock.

Some haying has started in the northeast, with 4% cut. Quality is expected to be good to excellent.

Spraying operations are difficult and are creating ruts in the fields. Some farmers are using aerial application.

North western Saskatchewan (Crop Districts 9aw & 9b)

The north western region generally had cool, wet weather during the past week. An average of 16 mm of precipitation was reported, ranging from an average low of 15 mm reported in CD 9b, to an average high of 18 mm reported in CD 9aw. Flooding damage was reported across the region. Wind damage was reported in the North Battleford area.

Crop reporters rated crops in good to excellent condition at the following percentages: Fall Rye – 91%; Spring Wheat – 96%; Durum – 100%; Oats – 95%; Barley – 92%; Triticale – 91%; Flax – 100%; Canola – 89%; Mustard – 100%; Lentils – 100%; Peas – 98%; and Canary seed – 100%.

For crop development, north western reporters rate 76% of spring cereals at normal development for

this time of year; oilseeds – 72% at normal; pulse crops – 80% at normal; and fall cereals – 69 % behind at normal development. Cereals are in the tillering stage in the Lashburn area when they are expected to be in the shotblade stage.

Topsoil moisture conditions on crop land improved with 9320 of reporters rating topsoil moisture conditions as surplus, compared to 40% last week. Conditions improved slightly on hay and pasture land with 12% of reporters rating topsoil moisture conditions as surplus, compared with 17% last week.

Crop damage from gophers was reported in the North Battleford and the Turtleford areas. Leaf diseases are showing up in the Turtleford area and fungicide applications are starting. Patches of crops are yellowing but are expected to improve with the heat.

Pasture conditions have improved, with 100% of reporters giving good to excellent ratings compared with 97% at the end of May. Availability of livestock water remained the same, with all reporters indicating there were adequate supplies.

Some haying has started in the northwest, with 2% cut. Quality is generally expected to be good.

Spraying is behind due to showers.

Weekly Rainfall Summary

(in millimeters)

for the week ending June 24, 2006

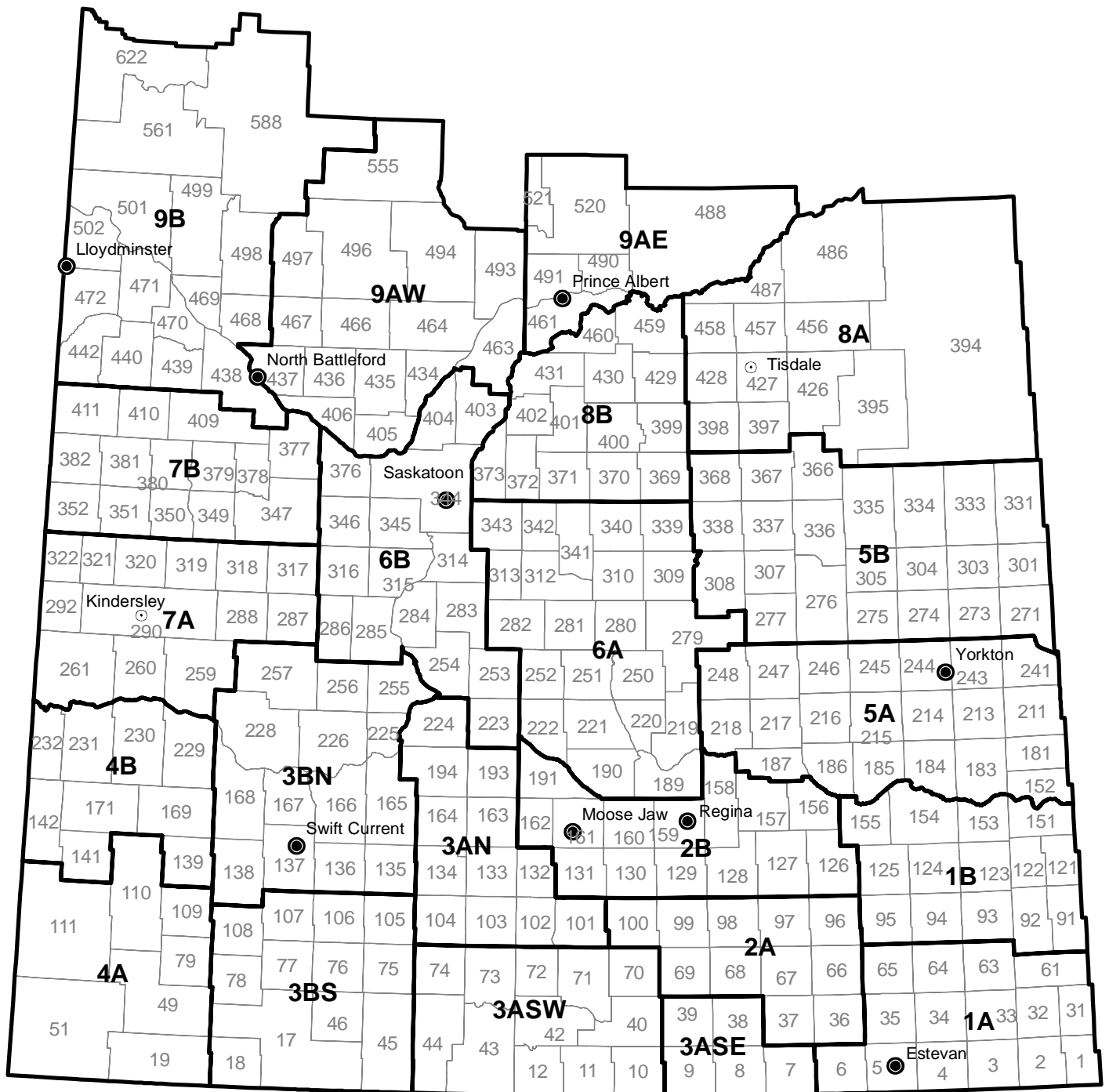
Crop Municipality				Crop Municipality				Crop Municipality				
Dist. No.	Name	Past Week	Since April 1	Dist. No.	Name	Past Week	Since April 1	Dist. No.	Name	Past Week	Since April 1	
1A	1 Argyle	3	144	136	Coulee	38	175	285	Fertile Valley	49	199	
	2 Mount Pleasant	8	152	138	Webb	33	159	314 B	Dundurn	60	191	
	3 B Enniskillen	10	150	166	Excelsior	38	174	344	Corman Park	27	124	
	32 Reciprocity	6	113	167	Sask. Landing	31	160	345	Vanscoy	43	159	
	33 A Moose Creek	13	141	225	Canaan	37	164	346	Perdue	42	203	
	34 Browning	10	204	226	Victory	23	165	376 B	Eagle Creek	19	140	
	63 A Moose Mountain	10	187	228 A	Lacadena	31	144	404	Laird	15	176	
	64 Brock	18	190	228 B	Lacadena	22	176	7A	259 Snipe Lake	21	111	
	65 Tecumseh	27	191	257	Monet	NIL	105	287	St. Andrews	19	100	
1B	91 Maryfield	11	127	4A	19 Frontier	6	126	288	Pleasant Valley	25	121	
	93 Wawken	11	184		49 A White Valley	10	97	292	Milton	39	179	
	95 Golden West	18	209		51 Reno	8	108	317 B	Marriott	25	180	
	121 Moosomin	32	188		79 Arlington	13	88	317 C	Marriott	33	145	
	122 Martin	32	201		109 Carmichael	23	126	318 A	Mountain View	35	171	
	123 Silverwood	19	230		110 Piapot	23	129	318 B	Mountain View	43	186	
	124 Kingsley	23	182		111 A Maple Creek	20	106	321	Prairiedale	55	223	
	125 Chester	22	164		111 B Maple Creek	21	120	322	Antelope Park	30	147	
	151 A Rocanville	16	244	4B	139 Gull Lake	10	116	7B	347 A Biggar	25	139	
	151 B Rocanville	25	304		141 Big Stick	23	130	350 A	Mariposa	NIL	137	
	153 Willowdale	8	186		169 Pittville	17	80	350 B	Mariposa	18	163	
	154 Elcapo	40	186		231 Happyland	14	161	351	Progress	25	153	
	155 Wolseley	25	221		232 Deer Forks	30	151	352	Heart's Hill	30	160	
2A	36 Cymri	17	230	5A	152 Spy Hill	14	249	377	Glenside	19	150	
	66 Griffin	20	182		183 Fertile Belt	27	217	378 A	Rosemount	27	129	
	67 Weyburn	14	186		185 Mcleod	21	193	379	Reford	17	121	
	68 Brokenshell	14	200		186 Abernethy	32	209	380 A	Tramping Lake	NIL	97	
	69 Norton	5	188		187 North Qu'appelle	16	193	381	Grass Lake	13	149	
	96 Fillmore	18	194		211 Churchbridge	10	214	382	Eye Hill	26	182	
	97 Wellington	34	190		213 Saltcoats	15	163	409	Buffalo	11	118	
2B	126 Montmartre	32	176		216 Tullymet	33	244	411	Senlac	31	215	
	127 Francis	56	199		217 B Lipton	18	195	8A	398 Pleasantdale	10	217	
	129 Bratt's Lake	30	170		241 Calder	7	164	428	Star City	11	191	
	131 Baildon	30	184		243 Wallace	8	184	456	Arborfield	4	171	
	156 A Indian Head	32	218		245 B Garry	23	222	457 A	Connaught	39	294	
	156 B Indian Head	39	224		246 Ituna Bon Accord	36	206	457 B	Connaught	14	181	
	157 South Qu'appelle	25	202		247 Kellross	45	286	458	Willow Creek	2	182	
	158 Edenwold	17	183		248 Touchwood	40	186	486	Moose Range	4	131	
	160 Pense	30	183		5B	271 Cote	16	172	487	Nipawin	2	179
	191 Marquis	12	196		273 Sliding Hills	13	122	8B	369 St. Peter	73	299	
3ASE	8 Lake Alma	2	178		275 A Insinger	30	318	370	Humboldt	18	211	
	9 Surprise Valley	11	192		275 B Insinger	26	223	371	Bayne	18	192	
	38 A Laurier	14	192		276 Foam Lake	24	257	373	Aberdeen	35	167	
	38 B Laurier	7	150		277 Emerald	49	238	399	Lake Lenore	16	201	
	39 B The Gap	3	162		304 Buchanan	10	215	400	Three Lakes	12	153	
3ASW	10 Happy Valley	11	123		307 Elfros	13	230	402	Fish Creek	15	168	
	12 Poplar Valley	11	132		308 Big Quill	36	166	429 B	Flett's Springs	7	170	
	42 Willow Bunch	10	148		335 Hazel Dell	15	234	430	Invergordon	8	205	
	43 A Old Post	5	126		336 Sasman	23	235	431	St. Louis	63	204	
	43 B Old Post	10	138		337 Lakeview	21	240	459	Kinistino	11	157	
	44 Waverley	6	200		338 Lakeside	33	233	9AE	461 Prince Albert	14	158	
	70 Key West	4	153		366 A Kelvington	13	177	520	Paddockwood	24	201	
	71 A Excel	8	183		366 B Kelvington	11	188	9AW	405 Great Bend	22	138	
	71 C Excel	11	240		367 Ponass Lake	58	291	406	Mayfield	16	160	
	73 A Stonehenge	8	188		367 B Ponass Lake	48	112	435	Redberry	21	174	
	73 B Stonehenge	17	208	6A	189 Lumsden	30	230	436	Douglas	17	174	
3AN	101 B Terrell	14	166		190 B Dufferin	29	222	436 B	Douglas	13	89	
	102 Lake Johnston	14	175		190 C Dufferin	21	195	466	Meeting Lake	15	150	
	103 Sutton	5	211		219 C Longlaketon	29	165	467	Round Hill	15	160	
	132 Hillsborough	14	212		220 Mckillop	19	224	493	Shellbrook	8	160	
	134 Shamrock	8	223		221 Sarnia	29	229	494	Canwood	6	227	
	193 Eyebrow	28	257		222 Craik	39	272	496	Spiritwood	28	175	
3BS	17 A Val Marie	14	137		251 Big Arm	15	175	555	Big River	36	194	
	45 Mankota	20	183		252 Arm River	54	199	9B	438 A Battle River	17	116	
	46 Glen Mcpherson	6	157		279 B Mount Hope	20	195	438 B	Battle River	21	138	
	75 A Pinto Creek	8	181		282 Mccraney	25	172	440	Hillsdale	17	89	
	75 B Pinto Creek	4	188		309 Prairie Rose	14	211	472	Wilton	25	141	
	76 A Auvergne	8	116		312 Morris	31	204	498 A	Parkdale	13	85	
	76 B Auvergne	18	148		313 Lost River	27	175	498 B	Parkdale	20	98	
	77 Wise Creek	6	78		339 A Leroy	37	181	499	Mervin	16	137	
	78 A Grassy Creek	16	121		339 B Leroy	25	228	501 A	Frenchman Butte	15	108	
	78 B Grassy Creek	8	84		340 A Wolverine	32	242	501 B	Frenchman Butte	21	112	
	105 Glenbain	12	330		340 B Wolverine	40	259	501 C	Frenchman Butte	8	143	
	106 Whiska Creek	12	159		343 Blucher	51	222	502	Britannia	27	155	
	107 Lac Pelletier	38	125		6B	254 Loreburn	40	174	561	Loon Lake	7	108
	108 Bone Creek	18	124		283 Rosedale	35	159	588 A	Meadow Lake	12	111	
3BN	135 Lawtonia	26	222		284 Rudy	49	196	588 C	Meadow Lake	5	93	
								588 D	Meadow Lake	NIL	88	

These precipitation amounts represent point locations within each municipality and do not necessarily reflect the whole R.M.

* incomplete

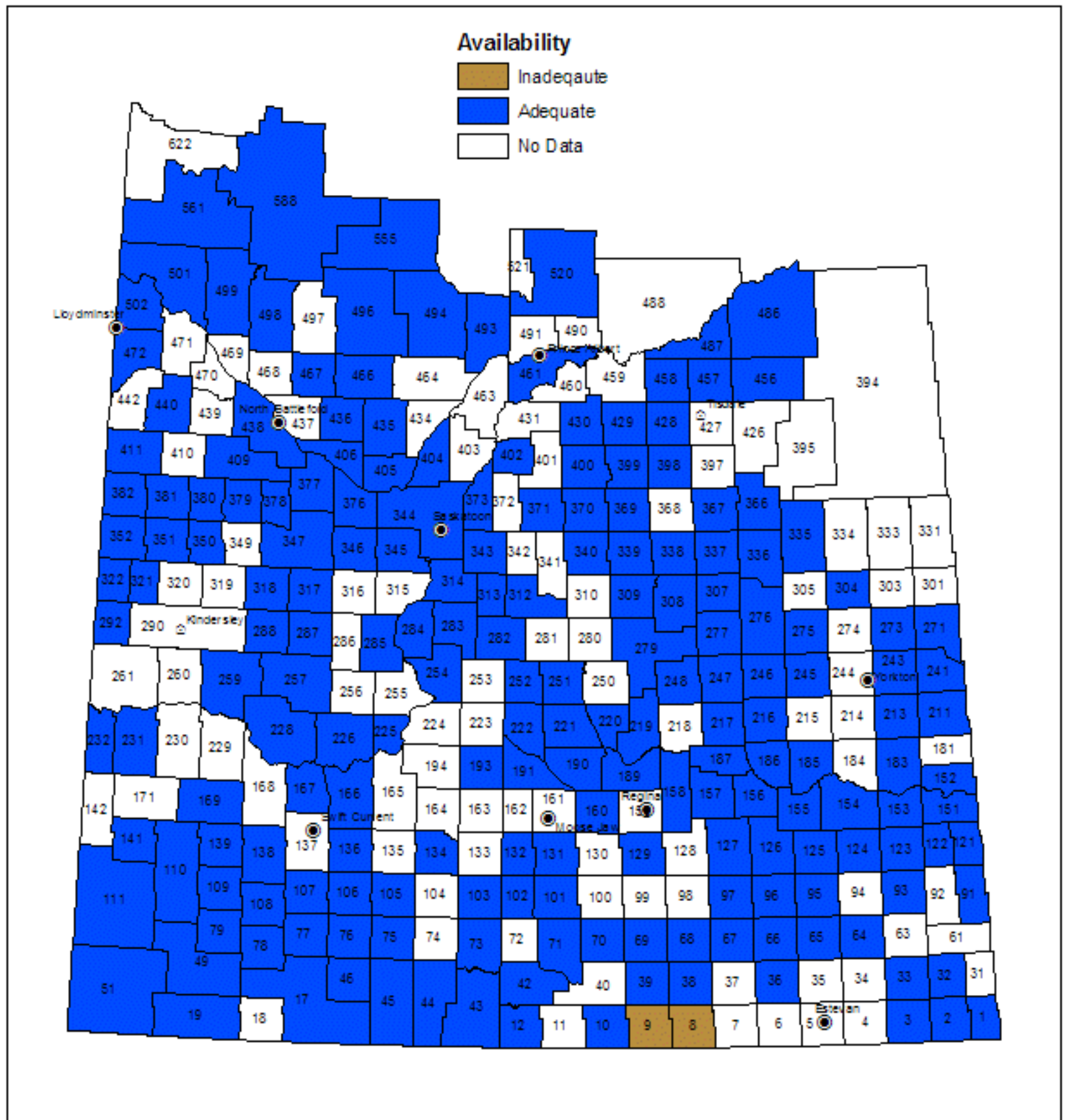
Municipality No: A, B, C, and D - more than one reporter

Crop Districts and Rural Municipalities



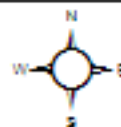
Availability of Livestock Water

June 25, 2006



**Saskatchewan
Agriculture
and Food**

0 25 50 100 150 200
Kilometers

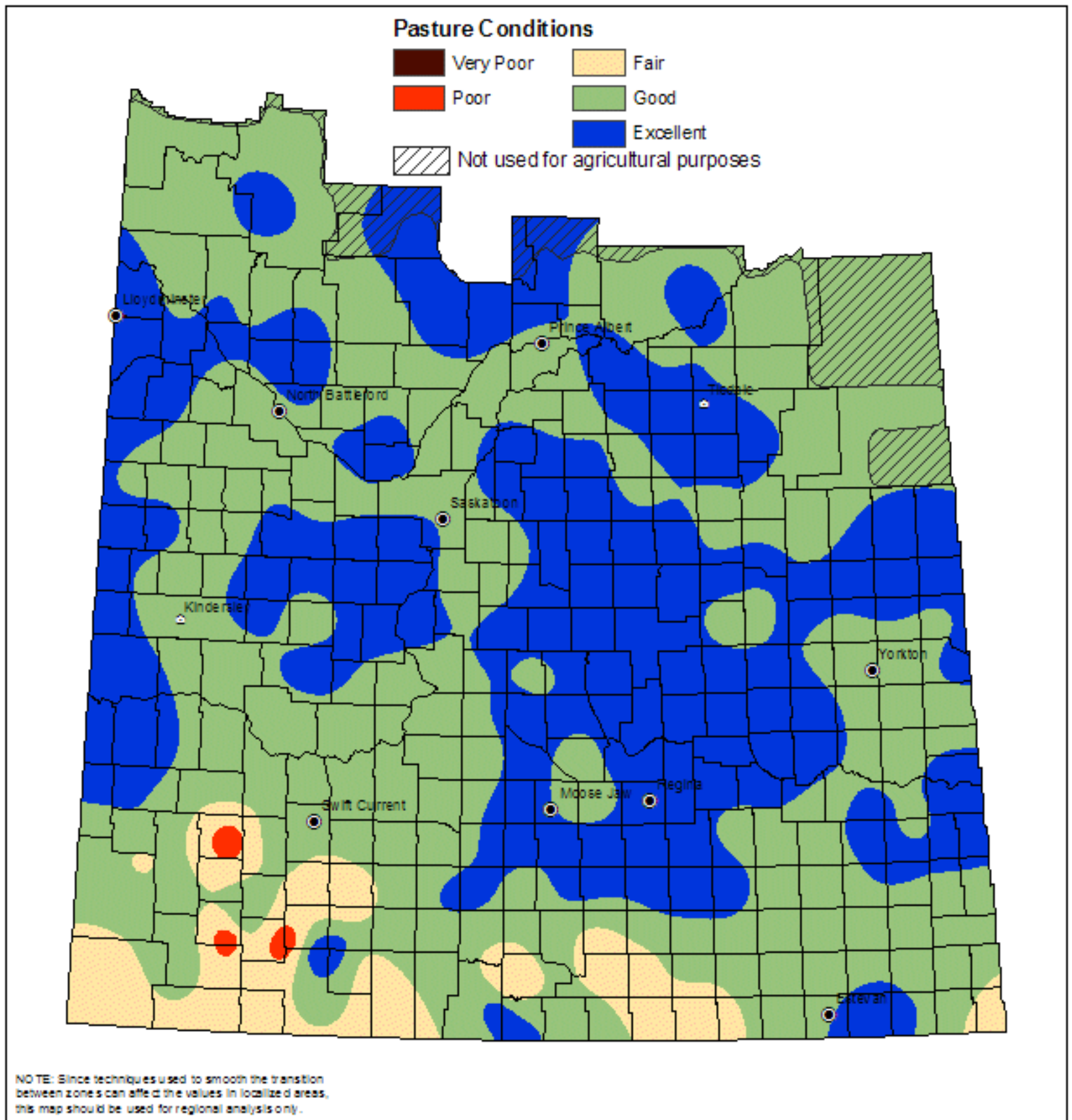


Livestock water data - SAF Crop Report Database
Base Geospatial Data provided under license to SAF,
© of Information Services Corporation of Saskatchewan

Prepared by : Geomatics Unit Date: June 26, 2006

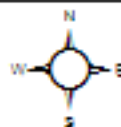
Pasture Conditions

June 25, 2006



Saskatchewan
Agriculture
and Food

0 25 50 100 150 200
Kilometers

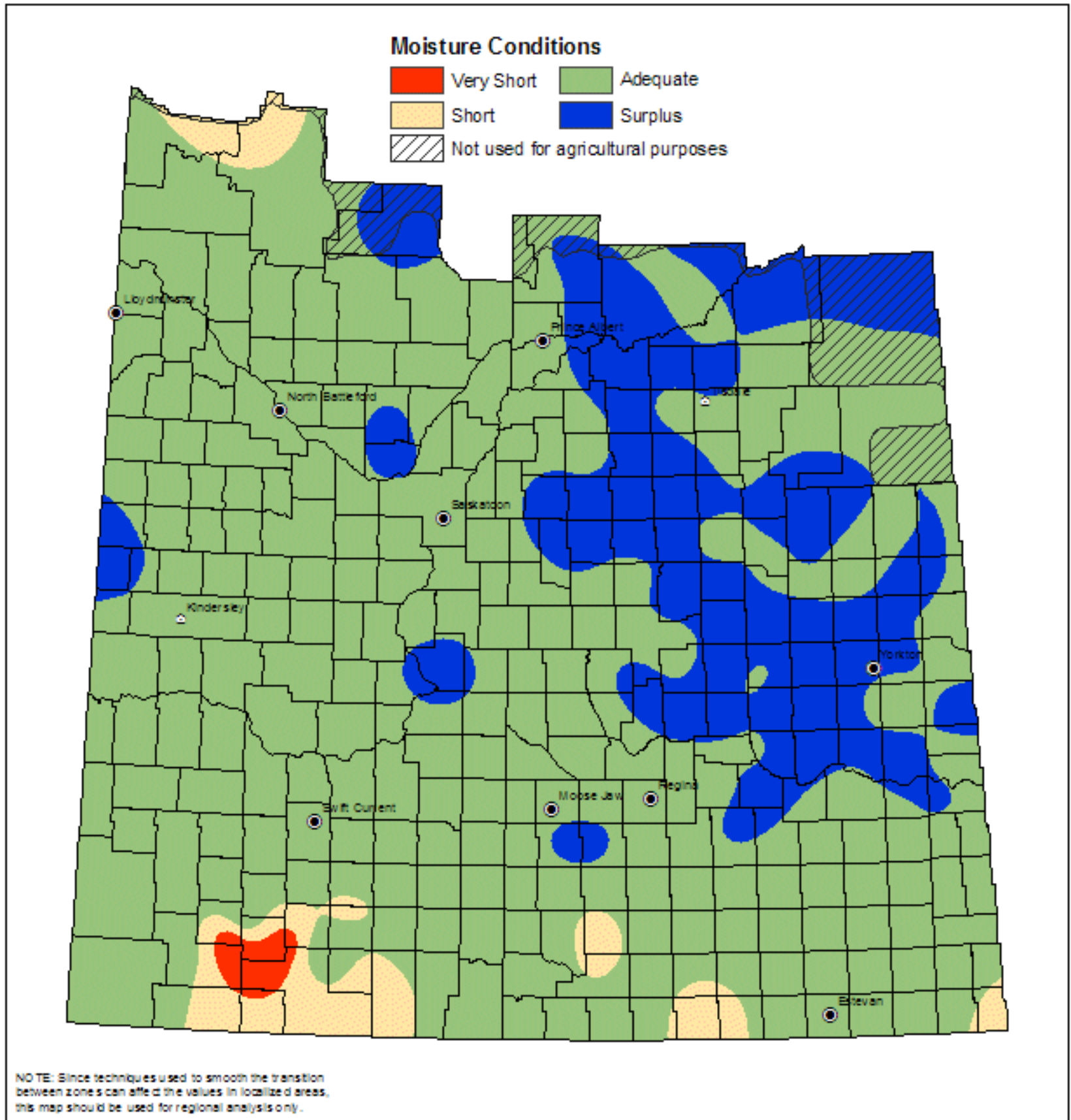


Pasture data - SAF Crop Report Database
Base Geospatial Data provided under license to SAF,
© of Information Services Corporation of Saskatchewan

Prepared by : Geomatics Unit Date : June 26, 2006

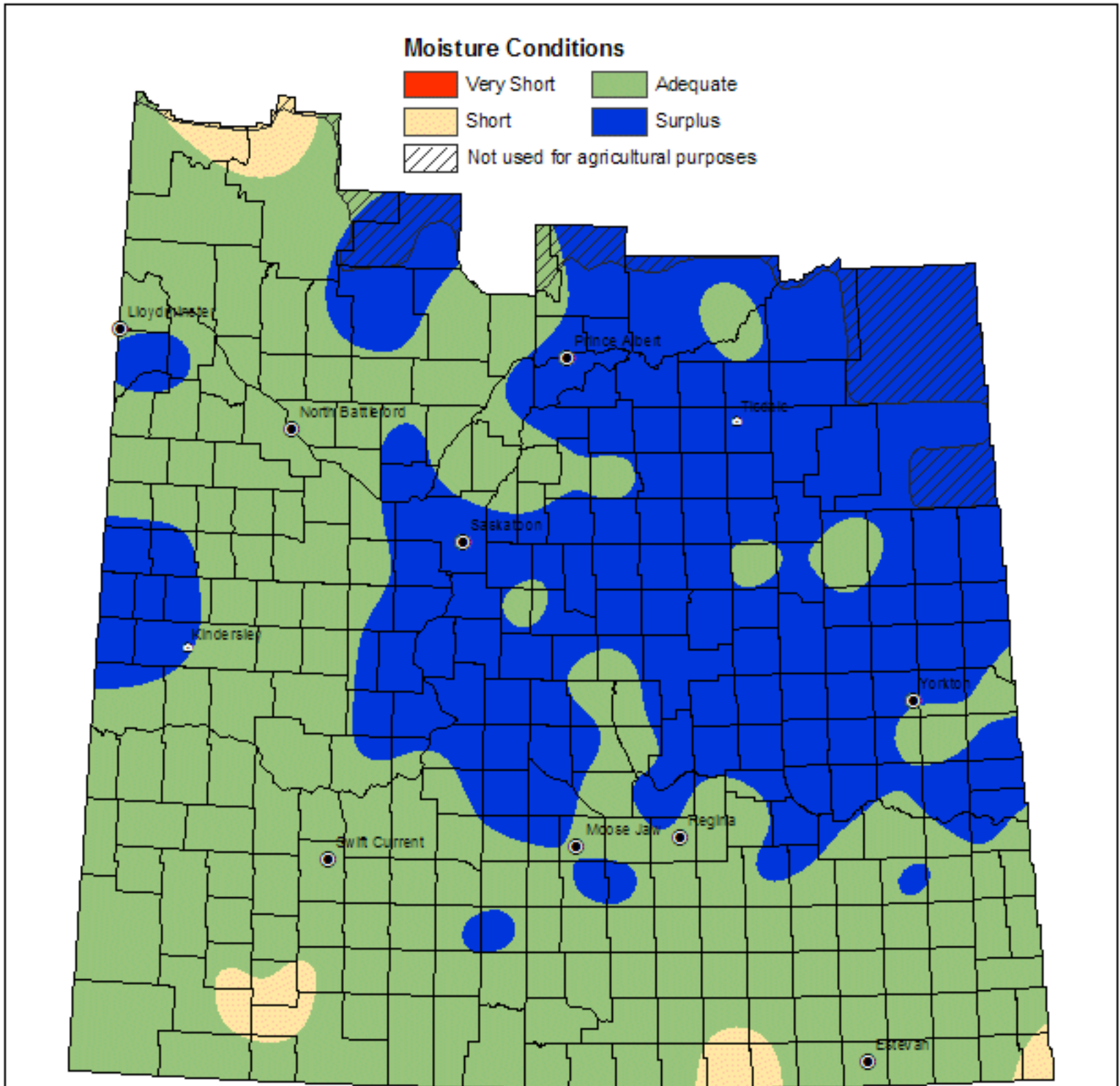
Hay and Pasture Topsoil Moisture Conditions

June 25, 2006



Crop Land Topsoil Moisture Conditions

June 25, 2006

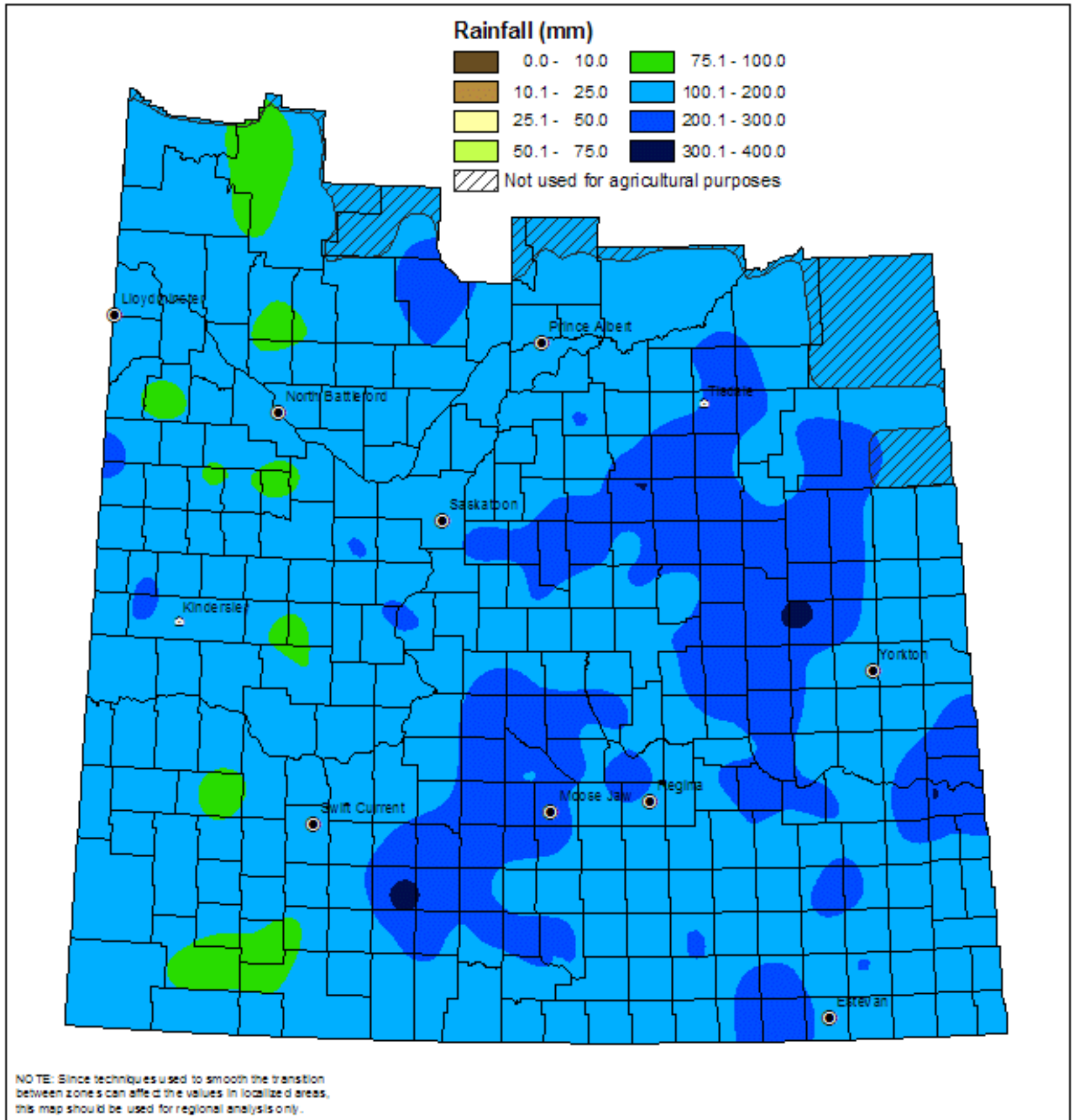


NOTE: Since techniques used to smooth the transition between zones can affect the values in localized areas, this map should be used for regional analysis only.

Cumulative Rainfall

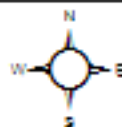
From: April 1, 2006

To: June 24, 2006



**Saskatchewan
Agriculture
and Food**

0 25 50 100 150 200
Kilometers



Rainfall data - SAF Crop Report Database
Base Geospatial Data provided under license to SAF,
© of Information Services Corporation of Saskatchewan

Prepared by: Geomatics Unit Date: June 26, 2006

